



WELTON ST MARY'S CHURCH OF ENGLAND PRIMARY ACADEMY



October 2023

Dear parents and carers,

As it begins to feel very autumnal outside, our Foundation Stage children have been taking in the wonder of our world. You may have seen them around Welton with their families, clutching a brown paper bag collecting leaves, conkers and sycamore seeds. The children also went on their first walk around the village as a year group, looking at how the colours are changing on the leaves and feeling the crispness under their feet. I wonder how often we stop in our busy lives and spend any time, just looking around us? How often do we take the time to be grateful for the beauty around us?

We have continued to work on our understanding of our school vision. We have pulled out 6 key phrases which are really important to us. To make it a bit easier for everyone to remember we have added an image.

- **Inclusive** 
- **Value each person** 
- **All to flourish** 
- **Strive for excellence** 
- **Rooted in God's love** 
- **Agents of positive change** 

What incredible leaders we have in our children. So many took up the challenge of applying to be house captains, collective worship leads and members of our school council. The votes have taken place and members have been elected. What we were so impressed with was the passion and enthusiasm that all applicants had for helping us to achieve our school vision; for being agents of positive change and making a difference either in our school, community or our world. We are really excited to be working with the children, who are representing our whole school community, to build on our successes. This year the school council have been very mindful of the cost of living crisis and have decided that whilst they will organise some fundraising events, their focus will be more on raising awareness as a way of making positive changes in our world. They have set each class a challenge to raise awareness, in school and beyond, about something that is important to them. It will be interesting to find out what the classes have chosen.

It has been great to have had so many parents coming into school and getting to know a bit more about our school life. Foundation Stage children have enjoyed sharing their new school and classroom with their parents; telling them all about their learning. It was also great to see so many Foundation Stage parents at the collective worship led by Rev Carol, who welcomed everyone to our school family. We have had parent workshops about how we teach Active Spelling and phonics, all of which have received very positive feedback. Parents, family and friends joined us to share in our iSingPOP concert – a truly uplifting afternoon and our Harvest Festival. We received a very moving card from a grandparent who attended the Harvest festival congratulating the children on their singing, dancing and performing and thanking all involved for their thoughtfulness and hard work in preparing for and arranging the service.



As we come to the end of the first term, I would like to take this opportunity to thank you all for your support with all we are working to achieve at Welton St Mary's. We look forward to next term as we prepare for Christmas.

Kind regards

Mrs Gough

Beyond the classroom

We like to give our children experiences beyond the classroom. Year 6 have attended a Construction Day where they learnt new skills and how what they learn in the classroom is used in the world of work.



Year 4 had a day of 'all things Lincolnshire'. Both events were at the Showground and were thoroughly enjoyed by the children. The Environment Agency led a session for our Year 4 children about our impact on the environment and flood water. The staff leading the session shared how engaged our children had been and that they had given some responsible and knowledgeable answers - the best they'd had all day! Living through our values and definitely showing they are agents of positive change.



Our Year 3 children (on a very wet Friday) enjoyed a day experiencing what life was like in the Stone Age.



Harvest Festival

Yet again, we were blessed with a lovely, crisp Autumnal morning for our School Family Harvest Festival. Rev. Carol and the Collective Worship Council led the interactive service based on the story of Jesus feeding the 5000. A reflective dance helped everyone think about how they can be agents of positive change, especially during this season. Children from each class, brought forward their donations to the altar during the reflective dance. A year 6 student taught the whole school a Makaton blessing to say over the donated food.



It was lovely to hear parents and carers join in with Autumn favourite songs. Rev. Carol talked about being thankful to everyone who helps with the harvesting of food, storing, selling and delivering to stores and also to the hands that make them. Most importantly, gratitude was given to God who blesses us with the sun and rain and the wonderful diverse seasons so that we can enjoy a variety of food during the year.

Prayers were also said for people around the world who are struggling at this time and for those who are able to help, that they are filled with the Spirit of Generosity, to help where they can.

Due to the overwhelming generosity of our school family, we were able to gather donations for both Welton Larder and Lincoln Foodbank this year. Thank you to all those who attended and donated. There is a regular collection box in the office for donations to the Welton Larder.



Year 4 Golf Tournament

Riley: It was really good and fun because I liked learning a new skill and hitting the ball was a challenge.

William: I found it a great experience because we learnt how to play gold properly and practised new skills like chipping and putting.

Ava: I found it fun because it helped me learn new things about golf as I have never played it before. My favourite part was when we practised swinging the club to hit the ball.



Rugby

Year 4 children enjoyed their rugby session at their 'Lincolnshire' day at the Showground whilst Year 5 are currently learning how to play Tag Rugby in their PE lessons.

Below are some sessions running in our area.

LINCOLN GIRLS RUGBY

TRY SOMETHING NEW

All abilities **welcome!**

Provision for ages 11 - 18

Come join us on **Wednesday evenings from 6:30pm.**

Get in touch:
info@lincolnrugbyclub.co.uk

LINCOLN RFC
 Longdales Park, Lodge Lane
 Nettleham, Lincoln, LN2 2RS

KIDS FIRST
 YOUTH SECTION
 TEAMS FOR CHILDREN FROM 4-18 YEAR OLDS

Benefits:

- Make new friends
- Learn new skills
- Play regular local fixtures
- Enjoy club social events at our fantastic purpose-built club house

LINCOLN RUGBY FOOTBALL CLUB

JOIN OUR RUGBY FAMILY

Youth Section:
 U6's (Y1) - U12's (Y7)
 Sunday Mornings
 U13's (Y7) - U18's (Y13)
 Wednesdays & Sundays

LINCOLN RUGBY FOOTBALL CLUB | LONGDALES PARK | LODGE LANE | NETTLEHAM | LINCOLN LN2 2RS
 01522 753967 / 07876872348
 WWW.LINCOLNRUGBYCLUB.CO.UK



Dates for your diary

Important dates for term 2. We will keep you updated if any dates need to be changed.

31st October – Start of term 2

31st October – Year 6 residential

14th November - Open afternoon for parents and carers of children starting school in September 2024 - appointment only at 1.45pm

17th November - Children in Need - Bring £1 to wear non uniform for the day.

w/c 20th November – Key Stage 2 Parents' evening (years 3, 4, 5, and 6)

24th November - Elephant class will be leading collective worship at 9.10am. Parents and carers of children in Elephant class are welcome to join our collective worship.

24th November – Year 2 castle trip

27th November – Year 5 Bikeability

1st December –. Parents and carers are invited to join their children at 9.10am to make Christingles together. School Christingle service

8th December - Giraffe class will be leading collective worship at 9.10am. Parents and carers of children in Giraffe class are welcome to join our collective worship.

12th, 13th, 14th December – Foundation Stage, Year 1 and Year 2 nativity performances (am)

18th December – Carols on the Playground (PM) and wear your Christmas jumper / wear something Christmassy day

19th December (change of date) Christmas dinner and wear your Christmas jumper / wear something Christmassy day

20th December – whole school to church for Christmas Service

20th December – end of term 2

Contact Us

Just a reminder that if you need to speak with your child's class teacher, either call or email the school office and we will pass the message on. As you can appreciate, the start of the school day is very busy for the teachers, which includes many important routines as well as most importantly welcoming the children into school and supporting them with their learning, which begins as soon as the children enter school.

Emails for forwarding on, should be sent to: enquiries@welton-st-marys.lincs.sch.uk

Thank you



Please only use Seesaw for communicating about learning, recording reading and completing learning at home. It is not a way to be passing messages to teachers. If you need to speak with teachers outside of the school day, it is through the enquiries email or by telephone.

Train, Trim trail and Gym Equipment

During regular school hours (9-3) when the equipment is supervised by a staff member it is considered safer and likely used within the guidelines of intended use. Outside of these hours and without supervision, there may be an increased risk, and the school is not responsible for any accidents or issues that may arise.

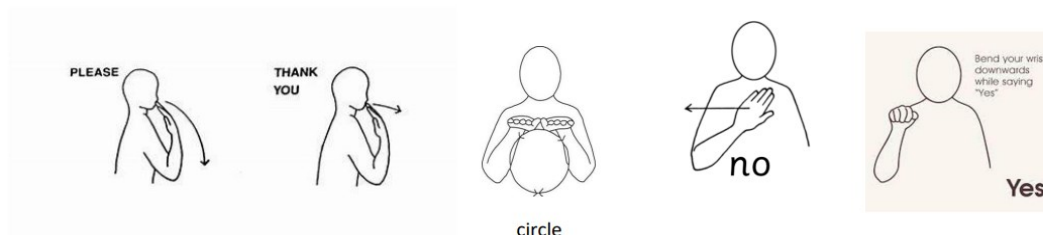


Makaton in school

Recall of our Makaton signs.



- What signs have we done so far?



Introduction to Makaton

Friday, November 24th 1:30 - 3:15pm at Welton St Mary's CE Primary Academy School

Only £10 per person - LIMITED SPACES AVAILABLE!

School Friends are very excited to announce that licensed Makaton tutor Kristie Fish will be offering an interactive introductory workshop to Makaton. You will learn approximately 48 signs / symbols (some with a Christmas theme!) as well as cover some background information and receive a useful handout.

Join us on Friday, November 24th from 1:30pm at Welton St Mary's School. To book a space simply email wsm-schoolfriends@gmail.com (subject line Makaton) payment information will be emailed through to you.

Limited spaces available for this event so please do book early!

Richard Fish from Makaton Tutor have very generously agreed to donate all of the money raised from this event to School Friends.

[Richard Fish Makaton Tutor](#)

<https://www.facebook.com/richardfishmakatontutor>



Operation Encompass

We are an **Operation Encompass School**, part of a national scheme that runs jointly between all schools and the police.

Operation Encompass is the reporting to schools, prior to the start of the next school day, when a child or young person has experienced, any domestic abuse.

Operation Encompass will ensure that a member of the school's staff (*the Designated Safeguarding Lead*), is trained to allow them to liaise with the police and to use the information that has been shared, in confidence, while ensuring that the school is able to make provision for possible difficulties experienced by children, or their families, who have recently experienced a domestic abuse incident.



We are keen to offer the best support possible to all our pupils and we believe this will be extremely beneficial for all those involved.

This information shared with the school is already covered in the schools' existing privacy notice. For further information in relation to how personal data in relation to yourself and your child(ren) is processed, please refer to Lincolnshire Police's privacy notice, which can be found on their website:

<https://www.lincs.police.uk/resource-library/data-protection/privacy-notice/>

Autumn Road Safety Education Newsletter



Autumn 2023 Newsletter for Primary Parents and Carers

Welcome back to the new school year 2023-2024! We hope that you and your family have had a safe and enjoyable summer holidays.

[Click Here for Newsletter](#)



TRAIL MAPS AVAILABLE
13-29 OCT: Taylors of Welton,
Welton Paper Shop & The Café Lounge

Maps
£2
each



2023 Welton

Storybook Scarecrow Trail



See which stories you can recognise
hidden around Welton this October half term.

21-29 OCTOBER

Trail maps & stocking fillers on sale:

The village green

Sunday 22 October 10am-12pm



T: 01673 860339 | E: enquiries@welton-st-marys.lincs.sch.uk
www.welton-st-marys.lincs.sch.uk

Current Vacancies

Midday Supervisory Assistant

7.5 hours per week (Monday – Friday) Term time only (Grade 2)

- Do you value the importance of lunchtimes for children?
- Are you keen to get involved and help children
- develop confidence and self-esteem through play?
- Do you enjoy working as a member of a team?
- Is healthy eating for children as important to you as it is to the Academy?

If so, we want you to be part of our team helping and supervising the children in the dining hall.

Welton St Mary's Church of England Primary Academy is looking for enthusiastic, committed people to join our friendly team. You will play a key role in the school day offering the children someone who they can talk to, someone who listens and someone who cares.

If you feel you can offer all of the above and would like to request an application pack please e-mail school on enquiries@welton-st-marys.lincs.sch.uk or download a pack from our [website](#).

Welton St Mary's Church of England Primary Academy is committed to safeguarding and promoting the welfare of young people and expect all staff to share this commitment. All posts will be subject to an enhanced DBS disclosure, medical and reference checks. All Pre-employment checks are in line with "Keeping Children Safe in Education".

School Crossing Patrol Vacancy

Helping children cross the road is an important job. You will need to be traffic aware, have a sense of responsibility and the ability to work alone, outside on the highway and in all weathers.

Location: Ryland Road, Welton. Reference: 20025641

Morning Start Time: 8.30. Morning Finish Time: 9.10. Afternoon Start Time: 15.20. Afternoon Finish Time: 15.55.
Total Hours: 6 hours 15 minutes. Monday – Friday. School Term time only. Hourly Rate: £ 9.98

Apply online: www.lincolnshire.gov.uk/jobs

Further details from: Pam Street – Road Safety Officer

Mobile No: 0787 6035186



What Parents & Carers Need to Know about EA SPORTS FC 24

After two decades of holding the official FIFA licence, EA Sports' phenomenally successful football video game series has embarked on a solo run at goal. This season's iteration marks the debut appearance of a new name and branding, but don't let those fool you – EA Sports FC 24 is still a very similar proposition to last year's FIFA 23. Popular features such as Ultimate Team remain a big focus, meaning that potentially costly in-game spending is still among the line-up of risks that parents and carers should be aware of.

WHAT ARE THE RISKS?

RECURRING RELEASES

EA Sports FC 24 effectively picks up the FIFA template – meaning that after a year, we can expect EA Sports FC 25 to hit the shelves. Updates between versions of the FIFA franchise tended to be minor, but young fans of the game are almost certain to want the new edition in around 12 months' time, so they can keep playing with updated team kits, players and squad lists.

OFFENSIVE VOICE CHAT

FIFA 23 introduced cross-platform play, and EA Sports FC 24 goes a step further with Clubs, Seasons and Ultimate Team cooperative modes across PlayStation 5, Xbox Series X and S, and PC. That's exciting news for youngsters who love to play with friends online – but connecting a much wider audience does potentially open lines of communication between children and far older online gamers.

IN-GAME PURCHASES

In FIFA, Ultimate Team proved to be a profitable innovation for developers Electronic Arts (EA), and is now found in many of their other titles. Players spend in-game currency to recruit better footballers for their team, but this process can take a frustratingly long time – so young fans may be tempted to skip the grind by paying real-world cash to unlock that coveted star midfielder.



ULTIMATE TEAM SCAMMERS

Since the mode was introduced, Ultimate Team has been a target of scammers who attempt to coax players into buying or selling outside the terms of service from EA and console manufacturers. This shady practice can lead to accounts being banned and in-game items being lost. In some cases, young gamers have also been hoodwinked into handing over their payment details to the fraudsters.

POTENTIAL FOR ADDICTION

Just like real-life football, EA Sports FC 24 offers a thrilling, dynamic blend of tactical awareness and skill that fans find absolutely engrossing. Among younger players in particular, this could lead to identifiers of a gaming disorder as they plead for "just one more game" before bedtime or spend practically all weekend playing more matches to earn additional Ultimate Team packs.

Advice for Parents & Carers

CONTROL SPENDING

If your child enjoys Ultimate Team mode, check that your payment details aren't linked to their account. Bundles of FC Points (the game's currency) start at just £1, so multiple payments can easily slip under the radar. You could consider setting your child an in-game allowance, perhaps through a prepaid card, which will help them to realise that online spending has a real-world effect.

DEFEND AGAINST SCAMMERS

EA does contact players via email (although not to ask for usernames or passwords, so watch out for that scam tactic), but never through the game itself – so be wary of incoming messages and consider blocking and reporting suspected spam. Your child should avoid buying coins (the in-game currency) from external sites: it could end with them losing their money and being banned from the game.

AVOID EXTRA TIME

Many parents of young football-oriented gamers worry about their child playing too much EA Sports FC. There's now also a companion mobile app, which can also often provide another indicator that a child is struggling to disengage from the game. You could initiate discussions around set hours of play – or take stronger action by utilising the parental controls on their console or phone.

SHOW TOXIC CHAT THE RED CARD

Playing EA Sports FC 24 with friends is highly enjoyable, but if competitive types start to turn toxic online, it can ruin everyone's fun. You could occasionally listen in on the voice chat of your child's game for any warning signs that things may be about to boil over. This goes double when playing online with strangers: voice contact with unknown players can be turned off in the game's settings.

CELEBRATE THE VARIETY

Ultimate Team may be the game's 'star player', but there's plenty more to do in EA Sports FC 24 – including modes which allow access to all of football's big names without needing to spend money on packs to unlock them. This new version of the game includes even more women's teams, marking another step forward in representation: an important subject to discuss and celebrate with children.

Meet Our Expert

Ujjay Coombes is Editor in Chief of gaming and esports site GGRecon and has worked in the gaming media for around four years. Always eager to test out the latest apps, games and online trends, he's also a parent who understands the importance of online safety. Writing mainly about tech and fitness, his articles have been published on influential sites including IGN and TechRadar.



Source: <https://www.windowcentral.com/youngster-spends-over-8000-fifa-tba-highlighting-predatory-game-design-co/> <https://www.who.int/news-room/questions-and-answers/item/addictive-behaviours-gaming-disorder/> <https://www.eurogamer.net/18-european-countries-call-for-better-regulation-of-foot-boxes-following-new-report>

@natonlinesafety

/NationalOnlineSafety

@nationalonlinesafety

@national_online_safety

Users of this guide do so at their own discretion. No liability is entered into. Current as of the date of release: 18.10.2023

